

PANG  LIN

SAFETY

CATALOGUE

"We are PPE Specialists"

CONTENT

PANGOLIN

Master
Lock
3M

PANGOLIN
CARDIAC
science

Page 11

INDUSTRIAL
SCIENTIFIC

Page 11

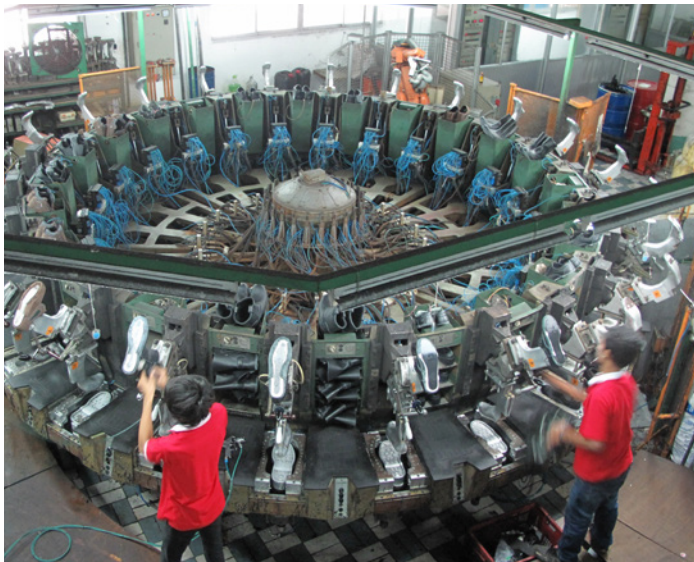
3M DBI SALA singing rock
PROTECTA SWELOCK

Page 10

PANGOLIN

Page 9

Your Safety DNA



Pangolin Safety Products Co., Ltd., formally Safety Shoes, was established more than 30 years ago as the first safety shoe manufacturer in Thailand under the PANGOLIN brand, we are the first safety shoe manufacturer in Thailand who obtain certification from the *Thai Industrial Standard Institute* (TISI 523-2528). Our *ISO 9001:2000* quality management system is third party assessed by Bureau Veritas and we are gold members of *SATRA*, the UK's foremost research & development and test organization for Safety footwear. Our manufacturing facility also has a bespoke state-of-the-art test laboratory ensuring consistent quality throughout the range. Customers, both national and international, have accepted the outstanding quality and standard of the product & service provided. Pangolin will never compromise on safety and will always go "that extra mile" to ensure a safer and healthier environment for all concerned.

Nationwide we own 17 showrooms located throughout the country and 2 showrooms in Myanmar (Yangon and Mandalay), which were opened in August 2012. Our sales volume has covered 65% of market share nationwide and we are proud to claim our brand as the market leader in safety shoes. As more and more industries have been raising their safety awareness, we have also expanded our business into a comprehensive safety solution under PANGOLIN SAFETY PRODUCTS CO., LTD.

Our business development team keeps on working hard developing new and innovative PPE and searching for strategic alliances with world renowned safety equipment manufacturers.

However, this is only half the story because Pangolin has much more to offer to become a "Professional Total Safety Solution Provider" such as:

1. Full technical service and back-up from simple PPE recommendations to complex on-site safety surveys.
2. All forms of PPE training such as use, care & maintenance tailored to the customer's requirements from the shop floor to the board room.
3. Respirator fit testing using the latest controlled negative pressure instrumentation.
4. Fully trained technical sales team able to offer safety solutions quickly and effectively.
5. Arranging and conducting bespoke seminars and technical workshops to educate personnel on all forms of occupational health & safety topics.
6. Local certified calibration services for gas detectors and associated equipment.

Global Famous Brands

Pangolin dedicates a lot of time and effort in searching for core manufacturing partners in the PPE industry. It is this dedication that has allowed us to make strategic alliances with some of the most important and innovative global safety equipment manufacturers such as **Sundström**, **Dräger**, **3M**, **SALA**, **PROTECTA**, **singing rock**, **SWELOCK**, **INDUSTRIAL SCIENTIFIC**, **ULTITEC** and **CARDIAC science**. We are committed to continue this search to bring our customers the latest in technological advances in PPE.

Our Customer References

We are suppliers to industrial plants and state enterprises throughout the country such as PPT Oil, Siam Cement Group, Thai Glass Industry, Toyota Motor Thailand and Thai Nippon Steel who we regard as long-time customers. In recent years, we have expanded our distribution network to the international market in countries such as Singapore, Malaysia, Laos, Cambodia, Myanmar and Vietnam.





9000S



TIS.368-2554



EN 397:2012 + A1:2012

HLMT9001

Vented Safety Helmet With New! Pin-Lock Suspension

HLMT9002

Vented Safety Helmet With New! Ratchet Suspension

Pangolin - Safety Helmet

- Robust ABS (Acrylonitrile Butadiene Styrene) helmet shell offers a high level of protection and durability, shock absorption, impact resistance along with heat and UV resistance.
- A full range of accessories, such as visors and clip-on ear defenders are available.
- A superior 6 points taped harness with either unique pin-lock or ratchet adjustment offers exceptional comfort and protection.
- Replaceable PVC comfort band.
- New style peak: shorter brim for improved upward vision.
- The 9000 series benefits from ventilation for added comfort.
- 2 point elasticated chinstraps are available but for added security, 4 point chinstraps are also available to further enhance a secure and comfortable fit.

8000S



TIS.368-2554



EN 397:2012 + A1:2012

HLMT8001

Safety Helmet With New! Pin-Lock Suspension

HLMT8002

Safety Helmet With New! Ratchet Suspension

HLMT4091ZZ

Pangogard Pin-Lock Suspension

HLMT4092ZZ

Pangogard Ratchet Suspension

HLMT4057ZZ

Pangolin Elastic Reflective Chinstrap

HLMT4059ZZ

Pangolin 4 Points Nylon Chinstrap

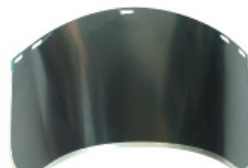
Browguard & Faceshield

HLMT0037YL
Browguard

EN 166-B, ANSI

HLMT0038ZZ
Aluminium Headgear

CE, ANSI

HLMT0028ZZ
Faceshield Gas Welding Visor

CE, ANSI Z87+

HLMT0030ZZ
Clear Visor

CE, ANSI Z87+



EYE PROTECTION

PANG Vision

Pangovision Spectacles

- Lenses manufactured from optical quality polycarbonate.
- All models have **abrasion resistant** and **anti-mist** lenses fitted as standard except model GLSS0080
- Superior vision to optical Class 1
- **Impact resistant** to EN 166 level **F**
- Free spectacle cord
- All spectacles tested at extreme temperatures

Len types	UV protection	Workplace
Clear	UV 99.9%	Indoor, Laboratory, Maintenance
I/O	UV 100 %	Indoor and outdoor
Grey	UV 99.9%	Outdoor



GLSS0089



EN166 ANSI Z87.1



GLSS0099



EN166 ANSI Z87.1



GLSS0103



EN166 ANSI Z87.1



GLSS0104



EN166 ANSI Z87.1

Pangovision Goggles

- Lenses manufactured from optical quality polycarbonate
- All models have **abrasion resistance** and **anti-mist** lenses fitted as standard
- Superior vision to optical Class 1
- **Soft PVC frames** for added comfort
- **Impact resistant** to EN 166 level **B**
- All spectacles tested at extreme temperatures



GLSS0108



GLSS0109

Can be worn over prescription spectacles



GLSS0106



EN166 ANSI Z87.1



GLSS0080



CE, ANSI



HEARING PROTECTION

PANG Care

3M

Earplugs

Silicone : Reusable

- Manufactured from hypo-allergenic silicone
- Noise reduction 24 dB (Sound Level conversion: SLC80)



EARS0053
Corded Earplugs with Carry Case



EARS0051
Corded Earplugs

PU Foam : Non Reusable

- Manufactured from extra soft, malleable Polyurethane Foam
- Noise reduction 29 dB (Sound Level conversion: SLC80)



EARS0054
Corded Earplugs



EARS0055
Earplugs

Earmuffs



EARS0003
Head Band Earmuffs
NRR: 30 dB



EARS0028
Cap Attachable Earmuffs
NRR: 27 dB





Disposable Mask

- **Mask** : Generally manufactured from electrically charged Polypropylene (PP)
- **Strap** : Synthetic Rubber, heavy duty and adjustable
- **Plastic or sponge structure** : Contoured facial seal and rubber seal nose bridge to fit facial contour
- **Valve** : Exhalation valve for extra comfort and lower exhalation resistance
- **Edge** : Embossed fringe seal avoids fibre loss through open layers around the edges

N95



MSKP4002
Molded Mask with Valve



MSKP4003
Folded Mask



FFP2

(EN149:2001: FFP2)



MSKP2002
Molded Mask with Valve



MSKP2003
Molded Mask with Valve and Activated Carbon



MSKP2005
Folded Mask with Valve



MSKP2006
Folded Mask with Valve and Activated Carbon

Half and Full Face Masks



MKH01-2112 (size S/M)
MKH01-2012 (size M/L)
SR100 Half Mask (Silicone)

SR100 is made of silicone. The mask is equipped with two exhalation valves which ensures very low exhalation resistance. The valve covers with partitions effectively protect the exhalation membrane against dust and paint mist.



MKH01-1212
SR200 Full Face Mask PC-VISOR

SR200 is made of silicone and equipped with three inhalation valves and two exhalation valves. SR200 is intended for use when maximum safety and breathing comfort are required.

Filter type	Protects against	Color
A	Organic gases/vapours with a boiling point above 65°C, e.g. solvent naphtha, toluene, styrene and xylene	Brown
AX	Organic gases and vapours with a boiling point below 65°C, such as acetone, methanol and dichloromethane	Brown
B	Inorganic gases/vapours such as chlorine, hydrogen cyanide and hydrogen sulphide	Grey
E	Acidic gases/vapours such as sulphur dioxide and formic acid	Yellow
K	Ammonia and certain amines	Green
Hg-P3	Mercury	Red-white



SR510



A1



ABE1



ABEK



K1

SR221 PRE-FILTER (16 X 5)



- Should always be used for particle, gas and combined filters
- The pre-filter protects the main filter against premature clogging by larger particles.



MKH06-0412
SR530 Hood (TH3)

- Cellulose Acetate material
- Chemical resistance
- Extended hood length offers additional protection for the neck and shoulders



MKH05-3512
SR77-2 Escape Hood

An air purifying escape respirator combined with a hood for emergency self-rescue in the event of fire or chemical emission accidents.



MKH06-7010
PAPR SR500 Fan Units with Standard Battery

- Powered Air Purifying Respirator (PAPR) with Standard Battery
- Triple warning system audible, visual and sensory (vibration)
- Visual battery power signal
- Simple filter cartridge system



MSCB-PSS3000
SCBA Drager PSS® 3000

- Lightweight and impact resistant composite housing
- 11 kg.- cylinder included
- Able to add more equipment such as radio communications or buddy breather
- Maximum usage time: 45 minutes



Pangolin - Cut Resistant Gloves

- Made with a High Performance Polyethylene (HPPE). This glove offers various levels of cut resistance.
- Good ventilation, exceptional dexterity and comfort along with superior washability (no fabric softener or chemicals)
- Protect hands from direct contact with sharp edges such as glass, metal, ceramics and other materials

Mechanical hazards EN388	Testing Standard	Cut Resistant Glove PANGOLIN
a) Abrasion resistance	0-4	4
b) Blade cut resistance	0-5	5
c) Tear strength resistance	0-4	4
d) Puncture resistance	0-4	3



GLVR0037
PU Coated Cut Resistant Gloves
Level 5

PU coated on palm side of the glove gives slip resistance and better grip e.g. handling windows and glass, metal processing operations, civil engineering, cleaning work and automotive.



GLVR0036
PU Coated Cut Resistant Gloves
Level 3



GLVR0047
Non-Coated Cut Resistant Gloves
Level 5



GLVR0049
Non Coated Long Sleeve
Cut Resistant Gloves Level 5



GLVT0014
Kevlar Cut Resistant Gloves

- Seamless knitted kevlar gloves
- 9 inches long
- Excellent cut & tear resistance
- Heat resistance
- Free size



GLVC-NLNF
Nitrile Foam Palm Coated
100% Nylon Gloves

- Seamless Knitted Nylon Gloves
- Nitrile foam coated on the palms
- Resistance against oils, acids and solvents
- Size: M, L, XL



GLVC-PLPU
PU Palm Coated Polyester
Gloves

- Seamless Knitted Nylon Gloves
- Coated PU (Polyurethane) on the palms
- Great dexterity and grip
- Size: S, M, L



GLVC-PLLT
Latex Palm Coated Knitted
Poly/Cotton Gloves

- Seamless Knitted Polyester Gloves
- Natural Rubber coated on the palms
- Tough exterior to protect against cut and abrasion
- Size: M, L, XL

Chemical Resistant Gloves



GLVR0034
High Performance Nitrile
Chemical Resistant Gloves

- Made from 100% acrylonitrile butadiene compound
- Resistance to abrasion, snags and punctures, longer wear and better protection than natural rubber gloves
- Resistance to a wide range of chemicals including strong detergents, greases, oils and most solvents
- Good grip - patterned palm ensuring good grip in both wet and dry conditions
- Comfort - anatomically shaped ensuring comfort and reducing hand fatigue
- Does not contain latex protein
- Thickness 15 mil (0.38 mm) x length 33 cm.



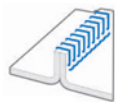
SAFETY CLOTHING

ULTITEC
Industrial

Dräger

Disposable Coverall

- Polypropylene materials, lightweight with good ventilation
- Weaving by Spunbond and Melt Blown, soft, strong and durable
- The seams are sewn for strength and over sealed with a chemical proof tape to ensure no penetration of liquid
- Design elasticated hood, waist & ankles for ease of movement
- Ample crotch avoids pulling rupture when squatting or crawling
- Flap zipper for additional prevention against penetration or permeation



Stitched Seam
Reinforced 4-thread overlocked seam offers stronger seam strength and better protection. For model 500, 1000L, 1000FR and 2000.



Stitched with Tape Seam
Stitched with chemical barrier tape seam for a higher barrier to particulate and liquid splashes. For model 3000T 4000.



	ULTITEC 500	ULTITEC 1000L	ULTITEC 1000FR	ULTITEC 2000	ULTITEC 3000T	ULTITEC 4000
Fabric		Spunbonded Polypropylene Melt Blown Polypropylene	Spunbonded Polypropylene Melt Blown Polypropylene	Breathable Film Spunbonded Polypropylene	Breathable Film Spunbonded Polypropylene	External Barrier Film Spunbonded Polypropylene
Pictogram	TYPE 5 TYPE 6 EN 1073-2 EN 1149-5	TYPE 5 TYPE 6 EN 1073-2 EN 1149-5	TYPE 5 TYPE 6 EN 1073-2 EN 1149-5 EN 1149-6 EN 14126	TYPE 5-B TYPE 6-B EN 1073-2 EN 1149-5 EN 1149-6 EN 14126	TYPE 5-B TYPE 6-B EN 1073-2 EN 1149-5 EN 1149-6 EN 14126	TYPE 5-B TYPE 6-B EN 1073-2 EN 1149-5 EN 1149-6 EN 14126
Item Code	SULT0500	SULT1000L	SULT1000FR	SULT2000	SULT3000T	SULT4000

Reusable Suit: Level A & B

- Protects against cryogenic hazardous substances and low concentrations of acids and alkalis
- UMEX laminated fabric offers excellent movements and flexibility.
- Equipped with a radio pocket and has a gas-tight Polyurethane (PUR) closure system
- The patented glove joint allows gloves to be changed quickly and without tools.
- Safety gloves and safety boots are connected to the suit in a gas-tight manner and can be easily replaced.
- The suit can be easily cleaned and disinfected over its service

Welding Coverall



SUIT0024

Welding Coverall

- Made from 100% cotton comfort finish
- Incredibly strong, durable and resistance to abrasion
- Studs front closing for ease to wear
- Tool pocket at chest and pants, pen pocket at left sleeve
- Size: S - 3XL



DRG-R29410
Level A Suit

EN943-1:2002

- Internal breathing apparatus the gas-tight
- The visor made of a special PVC that can be combined with an anti-fog lens and a cover lens.



TYPE 1



DRG-R29460
Level B Suit

EN943-1:2002

- External self-contained breathing apparatus the gas-tight
- Innovative suit design for more flexibility and comfortable entry into confined spaces.
- The face cuff offers flexibility when choosing the full face mask.



TYPE 1



Pangolin Safety Shoes Qualification

- **Genuine Leather thickness 2.0-2.2 mm.**, durable, long life, thicker than TIS standard 1.8-2.0 mm.
- **Special steel toe cap**, a force of 200 Jules, EN12568 standard, protects the foot from falling objects.
- **EPOXY coated steel toe cap**, no rust from water or moisture
- **Nonwoven Lining seals with PU insole**: special design to relieve shock-absorbition from standing or walking on hard surfaces and can be removed for cleaning.
- **Collar Padding Lining** (Cushion Padding) provides comfort when moving.
- **PU (Polyurethane) Direct Injection Sole** gives light weight, durability and resistance to chemicals, oils and 160 °C heat.
- **Direct Injection** provides a permanent shape to the leather upper.
- **Nitrile Rubber Vulcanized Sole** allows resistance to oil, chemical, slip and 350°C heat.
- **Cemented Sole** gives lightweight, durability and resistance to oil, chemical, slip and 350°C heat.



Rubber Outsole: Suitable for Heavy Industry, Steel and Metal, Automobile, Glass, Mining, Welding and Cutting Industries



9501RZZZ



9507RZZZ

PVC Boots

Suitable for wet environments such as Chemical, Construction and Food Industries



BOOT0017 / BOOT0019

14 Inch PVC Boots with Steel Toe Cap

MEN

Pangolin Size (UK)	3	4	5	6	7	8	9	10	11	12	13
US	4.5	5.5	6.5	7.5	8.5	9.5	10.5	11.5	12.5	-	-
EUROPE	37	38	39	40	41	42	43	44	45	46	47

WOMEN

Pangolin Size (US)	3	4	5	6	7	8	9	10
UK	-	2.5	3.5	4.5	5.5	6.5	7.5	8.5



EN12568

*Stainless steel midsole pierce resistance (addition)

PU Outsole: Suitable for Chemical, Maintenance, Petro Chemical, Automobile, Food, Drug and Electronic Industries



0389UZGZ*



0283UZZZ / 0283UZGZ*



0209UZZZ / 0209UZGZ*



9504UZZZ



2012UZZZ



9501UZZZ

Cementing Outsole: Suitable for Automobile, Food and Drug Industries



2001CZZZ



2012CZZZ

Hospitality



616CZZZ



651CZZZ

Lady



FALL PROTECTION



Rope Access

Rope access is called "royal discipline" in working at height activities. This working method is fast, effective, has little effect on the workplace and it is very quick to install and dismantle. It is used for a wide variety of work: cleaning, painting, inspection and other working situations.



HNSR1003
Full body harness



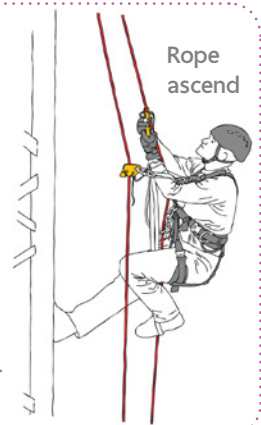
HNSR2006 [x2]
Rope with sewn loop



HNSR4003
Footer

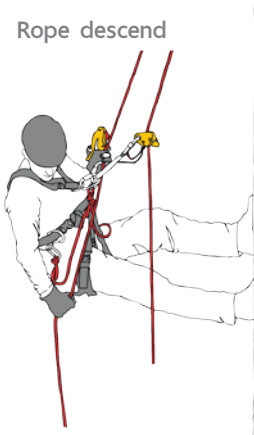


HNSR3013
Hand ascender



Rope ascend

Rope descend



HNSR3008
Descender with double Rocking

OR



HNSR3025
Sir Descender



HNSR3012
Carabiner



HNSR3014
Chest ascender



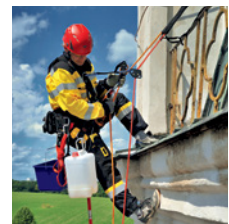
HNSR3005 [x4]
Carabiners



HNSR3009
Locker



HNSR3010
Certified sling for the locker



A Anchorage



SALA7600505
Sayline™ Synthetic Horizontal Lifeline System

15.2 m.

OSHA 1910.66,
OSHA 1926.502

Self Retracting Lifeline – Cable ANSI 359.14

SALA3590500



10 m.

SALA3590590



20 m.

Self Retracting Lifeline – Web ANSI 359.14

SALA3100426



3.3 m.

SALA3100432



6.1 m.



HNSL-K647KL
Double Webbing Type Lanyard
CE EN355



B Body Support



HNSL-K452KIT
Full Body Harness with Lanyard



CE EN361
CE EN354

SALA8102001



SALA3400923



SALA8000000
Aluminum Tripod 5' - 7'

SALA8102001
Self Retracting Lifelines/ Winch 20 m.

SALA3400923
Sealed-Blok™ Self Retracting Lifeline - Retrieval/Bracket 16 m.



SALA8000000

Descent/Rescue



GAS DETECTOR

INDUSTRIAL SCIENTIFIC



Ventis MX4

- Configured for your safety, the highly configurable and iNet-compatible Ventis™ MX4 takes your gas detection program to the next level.
- Configure for diffusion applications or with an integral sampling pump for sample draw applications
- Detect from one to four gases with a wide range of sensor options
- Gain visibility of the instrument in darker environments with a tough, "Safety Orange" overmold
- Realize true portability with multi-gas protection in single-gas size
- Utilize the diffusion monitor for 20 hours with a rechargeable lithium-ion extended range battery pack
- Discover a better way to do gas detection when operating the Ventis on iNet®
- 4 Sensor : O₂, LEL, CO, H₂S, NO₂, SO₂



Slide-On Pump

- Draw samples from up to 100 feet with an optional, integrated sampling pump



iBRID MX6

- 24 "Plug-and-Play" field-replaceable sensors including PID and Infrared options
- Simple, user-friendly, customizable menu-driven navigation
- Optional integral sampling pump with strong 30.5 meter (100 feet) sample draw
- Up to 6 gases monitored simultaneously
- Full-color graphic LCD is highly visible in a variety of lighting conditions.
- Five-way navigation button
- Powerful, 95 dB audible alarm
- Durable, concussion-proof overmold
- 6 Sensor : O₂, LEL, CO, H₂S, Cl₂, NO, NH₃, CO₂, PH₃, HCN, ETO, VOCs



WORKPLACE SAFETY

PANG LIN



EN 15154-2-2006,
ANSI Z358.1-2009

CLNS0043

Portable Eyewash #BD-600A

- Suitable for hazardous areas where there is no water supply
- Capacity: 60 liters
- Water displacement time: 20-25 minutes
- Water pressure 0.2 MPA- 0.6 MPA
- High visibility casing. Non-Toxic composition in case such as Lead, mercury
- Water expiration: 30 days



CLNS0041

Safety Eyewash with Foot Pedal

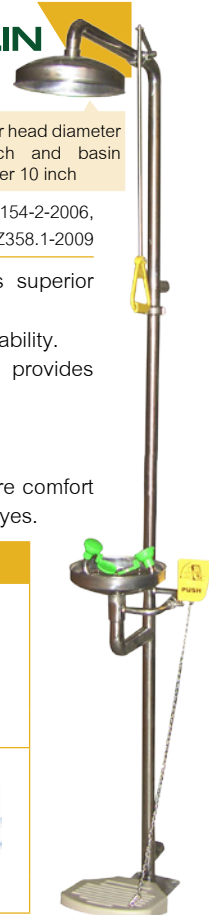
- Stainless steel construction provides superior protection against corrosion and rust.
- Brass valve provides strength and durability.
- ABS Cylolac eye washer nozzle provides durability.
- Water pressure 0.2 MPA - 0.6 MPA
- Hand and foot pedal activation
- Zero velocity apex point provides more comfort and control for effective cleansing of eyes.

CLNS0042

Safety Shower & Eyewash with Foot Pedal

Shower head diameter 10 inch and basin diameter 10 inch

EN 15154-2-2006,
ANSI Z358.1-2009



Sorbent

- Sorbent pads
- Size: 40 x 50 cm.
- Weight: 200 gms.per sqmtr.
- Manufactured from 100% polypropylene
- Odour free & resistance to flame
- Sorbent sock
- Diameter 7.6 cm.
- Length: 1.2m.
- Weight: 0.3 kgs/pcs.
- Manufactured from 100% polypropylene
- Odour free and resistance to flame

Haz-Chem



CLNS0035ZZZ



CLNS0036ZZZ

Haz-Chem and Oil



CLNS0038ZZZ

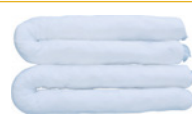


CLNS0037ZZZ

Oil



CLNS0040ZZZ



CLNS0039ZZZ



TECHNICAL AND TRAINING CENTER



PANGOLIN is especially proud of its brand new technical service centre located adjacent to our manufacturing facility. Here we provide a "PPE Technical Centre of Excellence" where we can carry out full training, PPE servicing & maintenance and safety workshops and seminars. Fitted with all the latest technology it is our "one stop shop" for providing a complete safety service to our customers."



EXCLUSIVE DISTRIBUTOR & PANGOLIN BRANCH



Myanmar

- Yangon
- Mandalay



Thailand

- Sukhumvit 22
- Rama 2
- Phrapradaeng
- Pantainorasingh
- Petchkasem
- Bangpoo
- Bangna km.18
- Suvarnabhumi
- Bowin
- Amatanakorn
- Maptaphut
- Bypass Cholburi
- Pratunampraintr
- Navanakorn
- Rojana
- Nongkhao
- Prachinburi



Laos

- Vientiane



Cambodia

- Phnom Penh



Malaysia

- Kuala Lumpur



Indonesia

- Jarkarta



PANGOLIN SAFETY PRODUCTS CO., LTD.
318/10-22 Soi Sukhumvit 22 (Sainamthip),
Sukhumvit Rd, Klongtoey, Bangkok 10110 Thailand

Tel. (+66) 2 259 0320-3, (+66) 2 259 2680-3
Fax. (+66) 2 259 5265

Email export@pangolin.co.th
www.pangolin.co.th



Pangolin Safety Products



@pangolinsafety